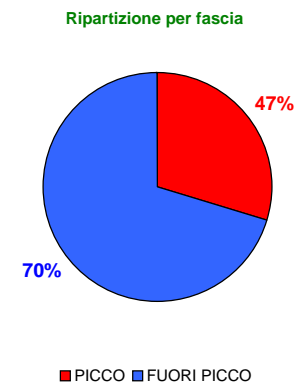
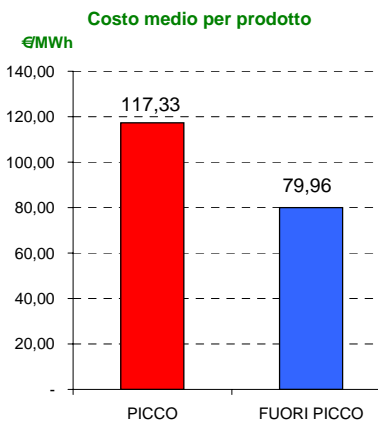
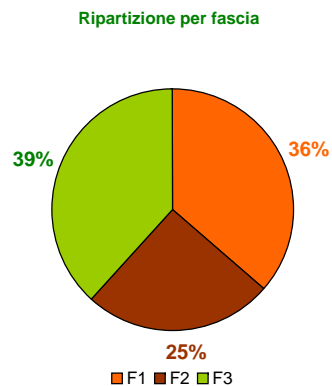
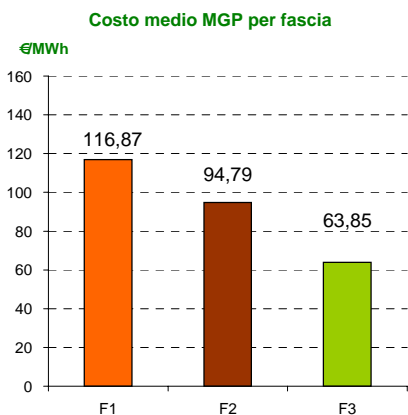
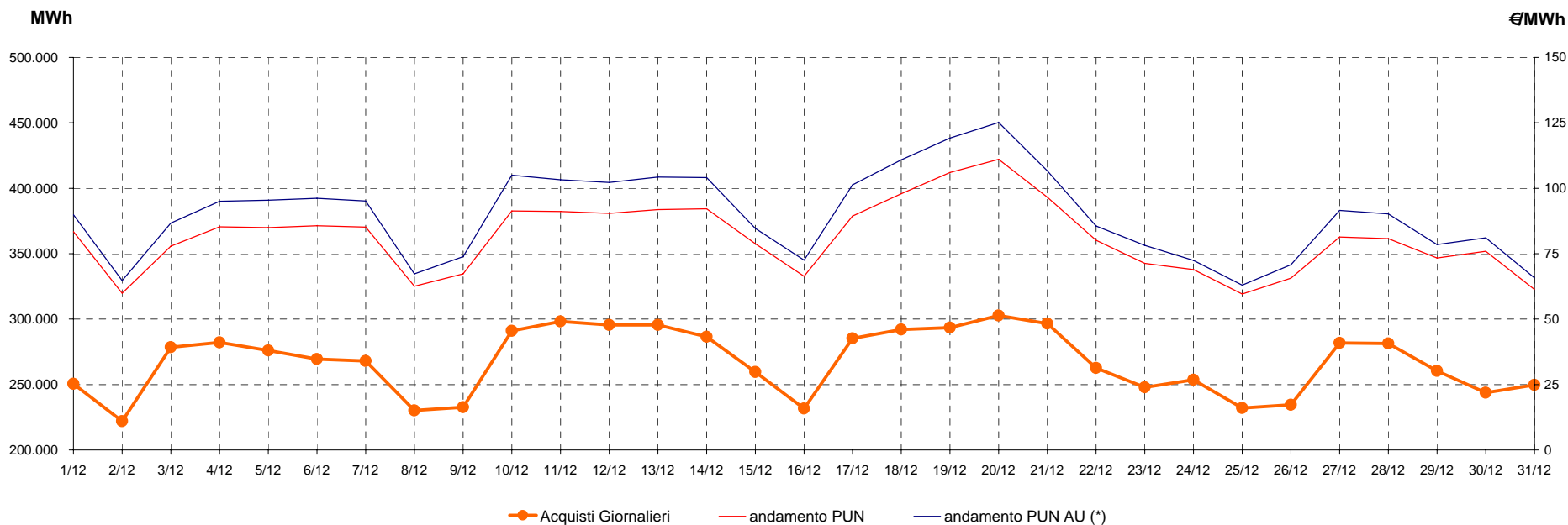


## Mercato vincolato

### Acquisti sul Mercato del Giorno Prima con profilo AU (\*)

dicembre-07

Media mensile PUN 81,08 €/MWh  
Media mensile PUN Profilo AU (\*) 89,69 €/MWh



(\*) Calcolata sulla quantità di energia oraria acquistata da AU su MGP  
Il profilo di AU è caratterizzato da un consumo prevalente durante le ore di maggior carico